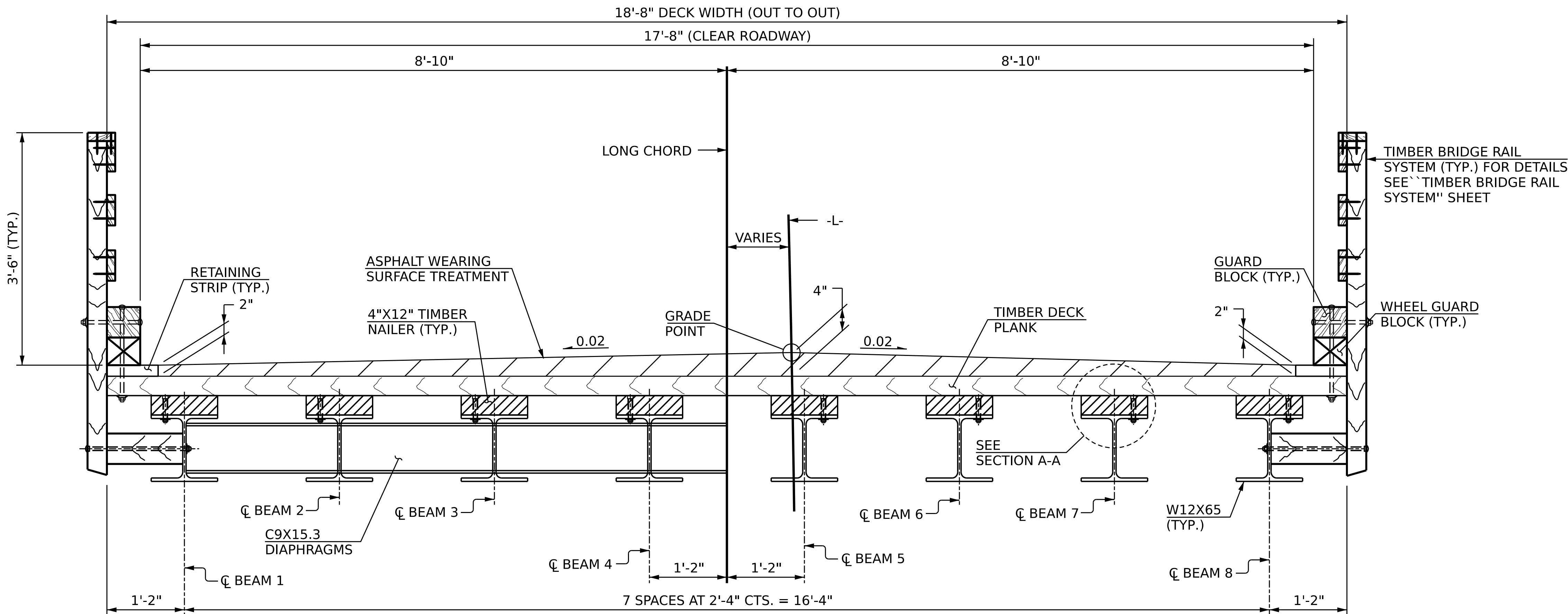
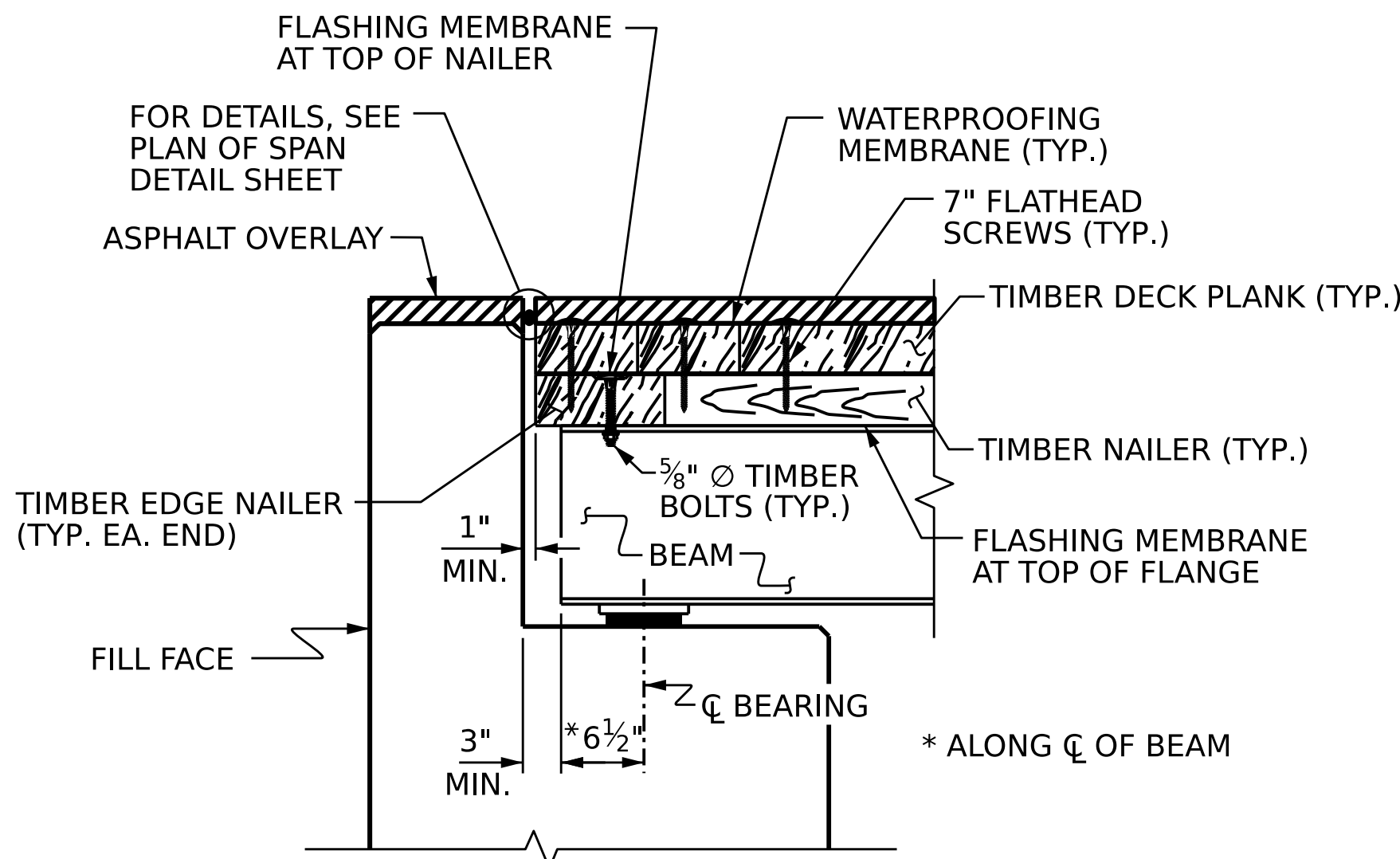


NOTES

- FOR TIMBER BRIDGE DECK SYSTEM DETAILS, SEE PLAN OF SPAN.
- FOR TIMBER BRIDGE RAIL SYSTEM DETAILS, SEE TIMBER BRIDGE RAIL SYSTEM PLAN SHEET.
- PRIOR TO PLACING TIMBER BEAM NAILER AND EDGE NAILER MEMBERS, PLACE A FLASHING MEMBRANE ON THE TOP SIDE OF THE STEEL BEAMS.
- PRIOR TO PLACING TIMBER PLANK MEMBERS, PLACE A SELF-ADHERING FLASHING MEMBRANE ON THE TOP SIDE OF THE TIMBER NAILERS.
- FOR BEAM AND DIAPHRAGM DETAILS, SEE FRAMING PLAN SHEET.
- FOR SECTION A-A, SEE "PLAN OF SPAN A AND SPAN B" SHEET 1 OF 2.



TYPICAL SECTION

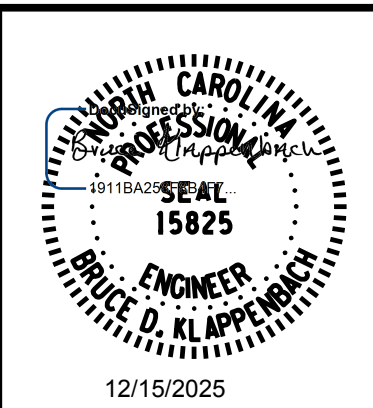


SECTION AT ABUTMENT

PROJECT NO.: 18314.1044073
HAYWOOD COUNTY
STATION: 12+13.00 -L-

STATE OF NORTH CAROLINA
DEPARTMENT OF TRANSPORTATION
RALEIGH

SUBSTRUCTURE
TYPICAL SECTION



RK&K
P: (919) 878-9560
8601 Six Forks Road, Forum 1 Suite 700
Raleigh, North Carolina 27615 | NC License No. F-0112
Engineers | Construction Managers | Planners | Scientists
www.rkk.com
Responsive People | Creative Solutions

REVISIONS				SHEET NO.
NO.	BY:	DATE:	NO.	
1			3	S-7
2			4	TOTAL SHEETS 21

DOCUMENT NOT CONSIDERED FINAL
UNLESS ALL SIGNATURES COMPLETED

DRAWN BY : B. H. GONFA DATE : JUL 2025
CHECKED BY : B. D. KLAPPENBACH DATE : JUL 2025
DESIGN ENGINEER OF RECORD: B. D. KLAPPENBACH DATE : JUL 2025